

# AFRICANA REISE 12-2009



# ECKDATEN AFRICANA



- BAUJAHR: 1979
- LÄNGE: 77.9 M
- BREITE: 15.3 M
- REISEGESCHW.: 12 KN
- MANNSCHAFT: 32
- WISSENSCHAFT: 23



# SCHIFFSSEITIGE AUSRÜSTUNG



- CTD: SEABIRD 911 PLUS O<sub>2</sub>, FLUOROMETER. LADCP (IOW) KANN AUFGESETZT WERDEN.
- ROSETTE: 12X8 L BUDDEL
- UNTERWEGS: THERMOSALINOGRAPH U. FLUOROMETER
- 5 WISSENSCHAFTL. WINDEN
- SCHIFFSSEITIGES ADCP: 75 KHZ
- ECHOLOTE: 18, 38, 120 UND 200 KHZ
- FROSTER: KEINE -80°C TRUHEN >> MITBRINGEN
- VERY LIMITED INTERNET ACCESS

# WINDEN

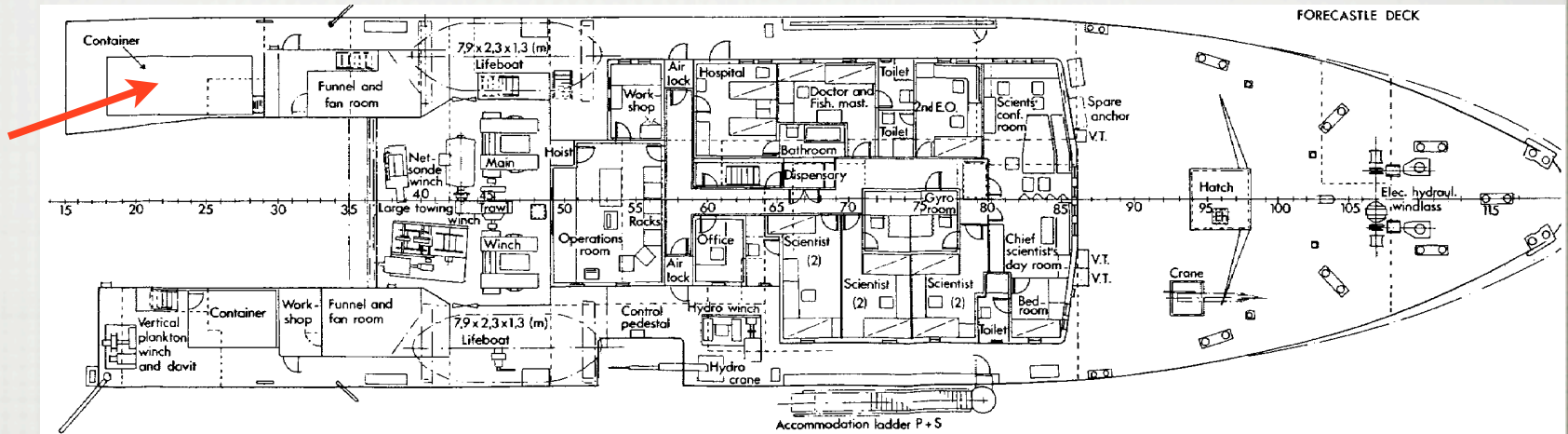


FRS Africana - Winch Cable Status Z. Isaacs  
 Compiled 28/02/2007 Updated 30 July 2008

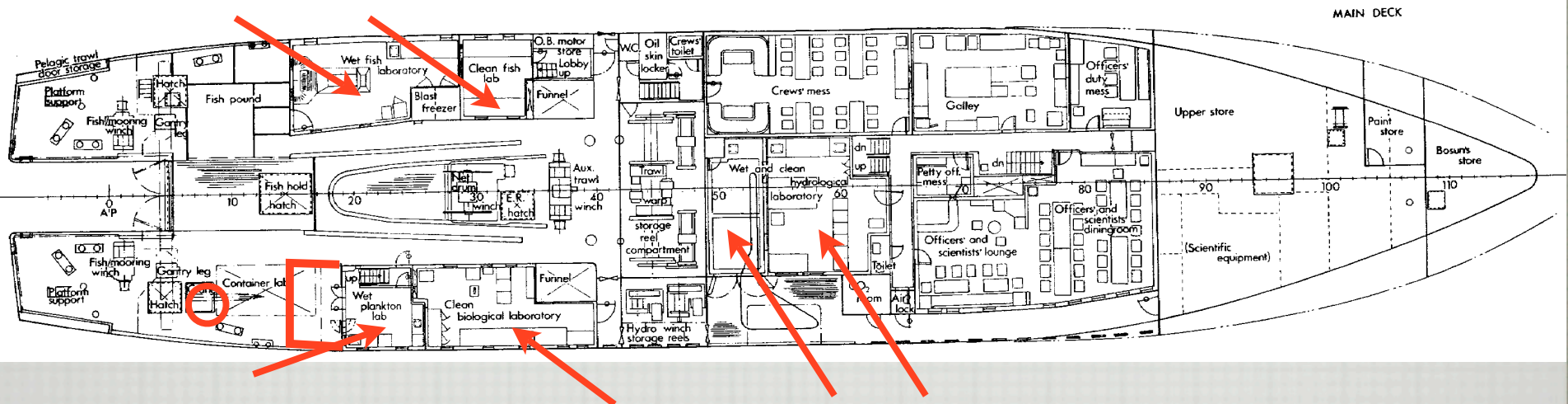
Amended by H. Engel Feb 2009

Location	Winch	Cable Diameter	Cable Tech Description	Purpose used	Cable Length at end 2008	New cable spooled	Ideal Cable Length/Max	Cable Status	Next Step
Africana	Hydro	10mm	4-H-375 Rochester	CTD	+/- 2500m	Spooled 3000m of 10mm cable onto Hydro Winch in 2006	3000m/5000m	Cable in good condition	
Africana	STW	8mm	7-H-314A Rochester	Undulator	+/- 600m	Spooled 600m of 8mm cable on STW for the Undulator	600m min/1000m	Cable in good condition	
Africana	VHW	7mm	4-H-2181A Rochester	Bongo U4's	+/- 500m	Spooled new 7mm cable from Agulhus onto VHW in July 2007	600m min/1000m	Surface rust	
Africana	LTW	12mm	10 Core	Methot U4	+/- 400m	Spooled 400m of 12mm cable from the Petrel crane to the LTW	600m min/2500m	Cable in fairly good condition	
Africana	Petrel Crane	12mm	10 Core	Bioness U4 and Hydro-	+/- 600m		600m min/?	Cable in good condition	
Gear Stores	on Reel	8mm	7-H-314A Rochester	Undulator	?		?	?	
Gear Stores	on Reel	10mm	?	?	?		?	?	

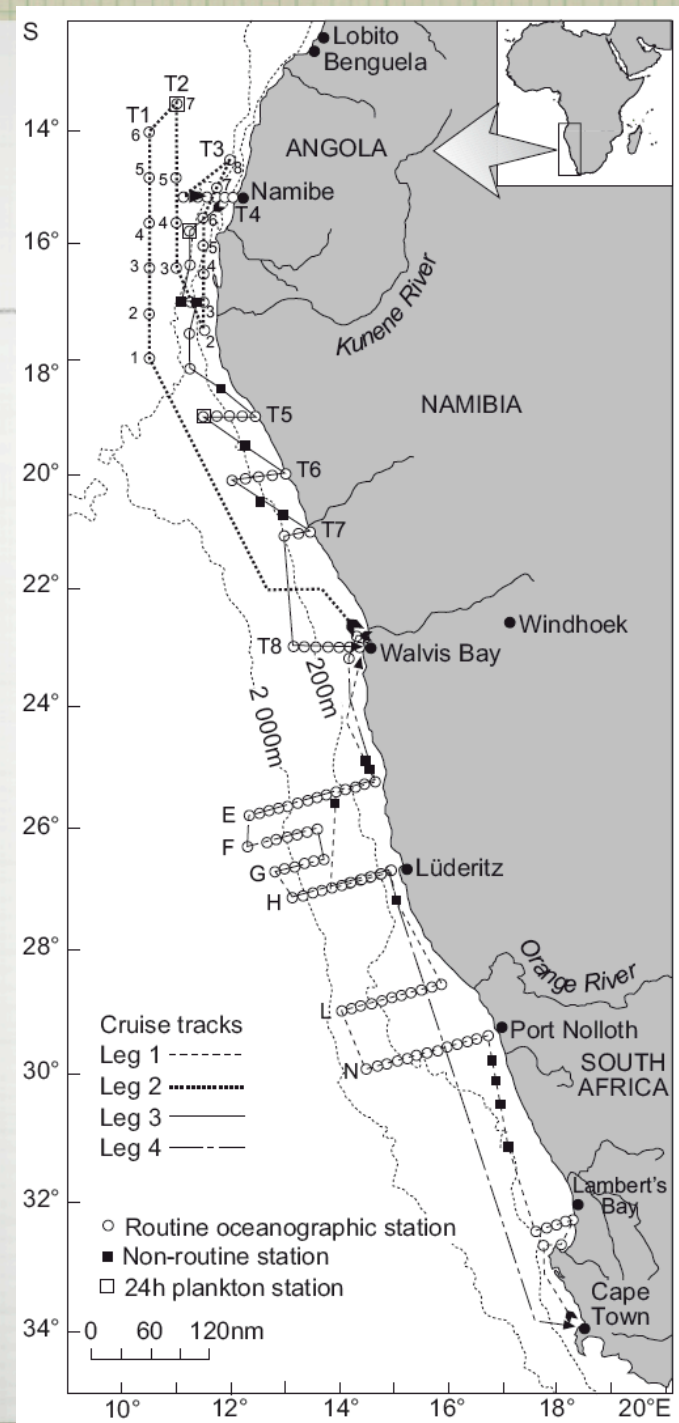
# LABORE



Research Ship Africana



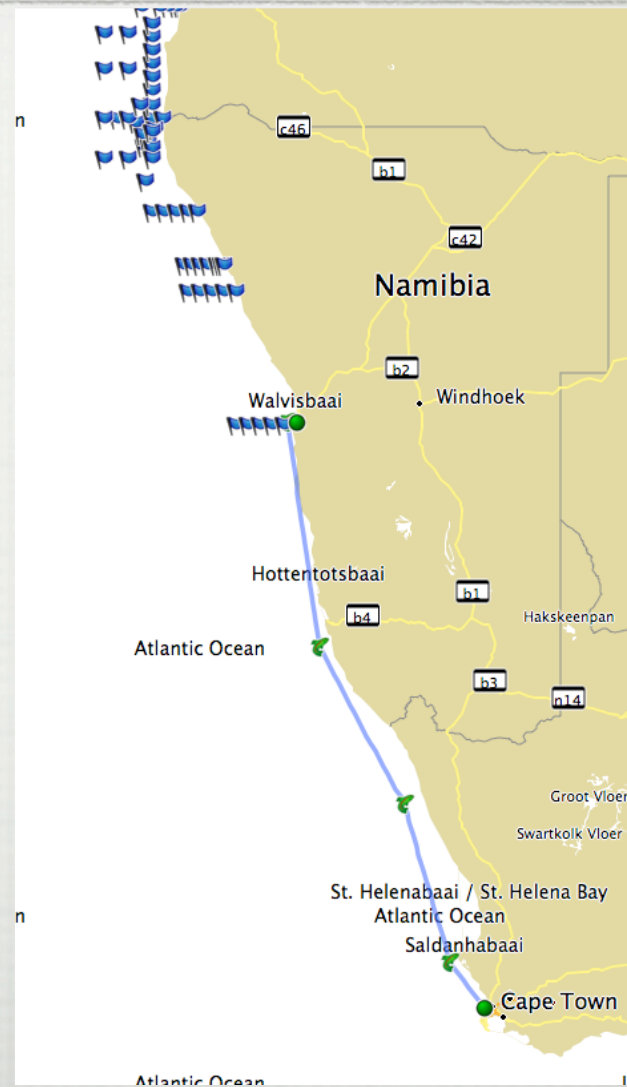
□ ARBEITEN WÄHREND  
AFRICANA REISE 2002



# ZEITPLAN



- AUSLAUFEN 1.12.2009
  - CT-WVB CA. 700 SM  $\approx$  60 H
  - 36 H STATIONSZEIT - U. WEGEZEIT
  - FISHEREI, CTD, MN
  
- AUSTAUSCH WVB 5.12.2009
  - WVB-CT CA. 700 SM  $\approx$  70 H
  - 170 H STATIONS- U. WEGEZEIT
  - CTD, MN, MOC, BIOGEO
  
- EINLAUFEN CT 15.12.2009



# BELEGUNGSPLAN



1.-5.12.09

TRAWLING MASTER

HYDROACOUSTICS

2 CREW PEOPLE FOR FISHERIES

4 SOUTH AFRICANS (HANS, ELECTRONICS, CHEMISTRY, STUDENT)

15 OTHER SCIENTISTS

5.-12.09

4 SOUTH AFRICANS (HANS, ELECTRONICS, CHEMISTRY, STUDENT)

3 NAMIBIANS

16 OTHER SCIENTISTS

15.12.09



# DEUTSCHE ARBEITSGRUPPEN

---

	CT-WVB (15)	WVB-CT (19)
AWI	2	2
IBCM	3	3
IHF	2	2
IOW	4	4
MARZOO	2	2
NAMIBIANER		3
ZMT-BIO	2	2
ZMT-BIOGEO	2	2
SUMME	17	20

# GERÄTE

---

- CTD (AN BORD)
- SEEWASSERPUMPE FÜR FERRIBOX UND CO<sub>2</sub>-SYSTEM
- ADCP
- CUFES
- PHYTOPLANKTON-NETZ
- MULTINETZE: VERTIKAL (MCM), OBLIQUE (ZMT)
- S. MOCNESS (IHF), TUCKER TRAWL (MCM)
- MULTICORER (IBCM)
- VERANKERUNG
  
- SATELLITENBILDER VON UCT (CHRISTO WHITTLE)

# VORAUSSETZUNGEN

---

- GÜLTIGE REISEPÄSSE
- ARBEITSVISA, VORHER ZU BEANTRAGEN
- MEDIZINISCHES ZEUGNIS VON DER  
SEEBERUFGENOSSENSCHAFT
  
- ANSCHLÜSSE VON GERÄTEN PRÜFEN